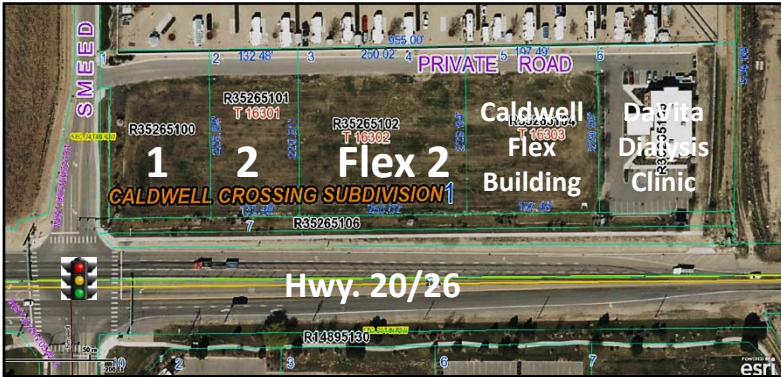


LOTS FOR SALE OR BUILD-TO-SUIT



LOCATION: Caldwell Crossing Business Park
Beacon Lane (Hwy. 20/26 & Smeed Pkwy.)
Caldwell, Idaho

Zoning: C-3 (Commercial).

PRICING:

Fully Improved Commercial Lots:
Signalized Intersection/Hwy. 20/26.
All utilities stubbed on site.
Improved common drive.
Perimeter landscaping.
Pressurized irrigation system.
Fire protection/hydrants.
Sidewalks.
Deceleration lane.

Lot # - Address	Area/SF	Price/SF	Price
Lot 1: 801 Smeed Pkwy	35,094	\$15.00	\$526,410.00
Lot 2: 805 Smeed Pkwy	30,457	\$14.00	\$426,398.00
Lot 3: 4618 Beacon Ln	57,487	New Flex Building	



Contact: _____
RFR Properties, LLC, PO Box 2579, Eagle, ID 83616
www.rfrproperties.com

Bob Runyan: 208.863.8209 or br@rfrproperties.com

The information contained herein has been obtained by reliable sources, but is not guaranteed. This offering is subject to errors, omissions, prior sale, price change, and withdrawal.